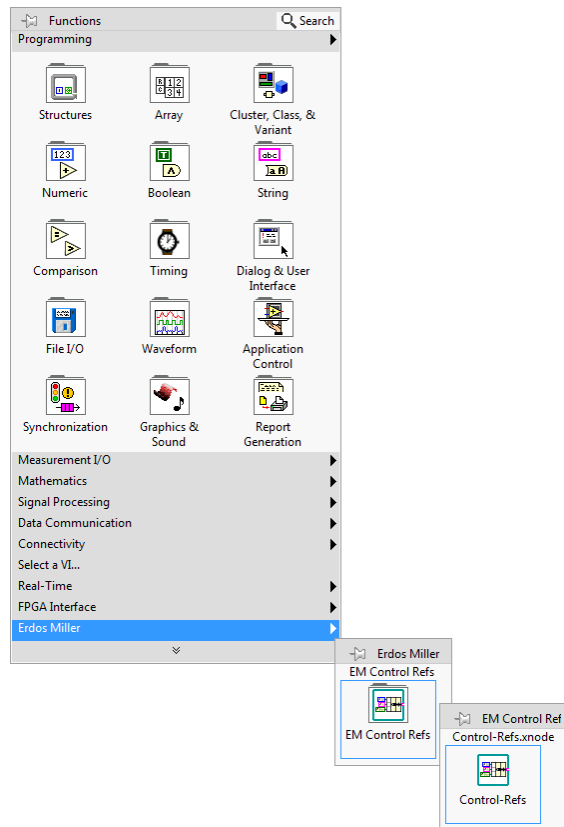


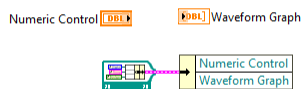
ERDOS MILLER CONTROL REFERENCES NODE FOR LABVIEW

USING THE NODE

The Control Refs node can be found on the Erdos Miller Palette



When Dropped, the Control Refs node will output a cluster of control references on the owning VI's front panel at the time it was dropped. If the front panel changes, the node's output can be updated by double clicking on it. Classes and reference types will not be included in the output data, with the exception of ActiveX and .NET control references.



BINDING TO A TYPEDEF

By right clicking on the node and selecting "Bind to Typedef", the output type of the node can be bound to a new or existing typedef. Any time the node's output updates, the bound typedef will be updated as well.

INCLUSIONS

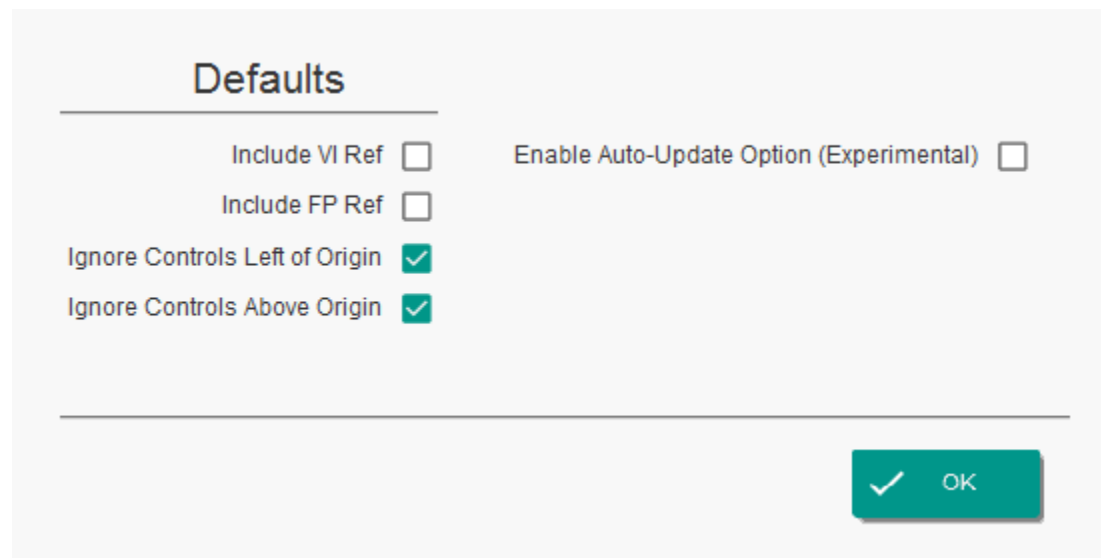
By right clicking on the node and selecting "Include" and "VI Ref" or "Front Panel Ref", you can also include a reference to the owning VI or the owning VI's front panel in the output cluster.

EXCLUSIONS

By right clicking on the node and selecting "Exclude" and "Controls Left of Origin", "Controls Above Origin", or a specific control, you can omit certain controls from the output reference cluster.

GLOBAL SETTINGS

By right clicking on the node and selecting "Global Settings", you can change the defaults of new nodes that are dropped.

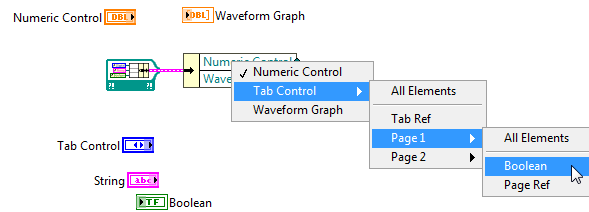


The image shows a "Global Settings" dialog box with a "Defaults" section. The section contains five settings, each with a label and a checkbox:

- Include VI Ref ☐
- Include FP Ref ☐
- Ignore Controls Left of Origin ☒
- Ignore Controls Above Origin ☒
- Enable Auto-Update Option (Experimental) ☐

At the bottom right of the dialog is a green button with a white checkmark and the text "OK".

TABS



Tab controls will create nested clusters, where controls on the tabs are organized into pages. Controls on tabs are not affected by the exclusion settings, but the owning tab is.